

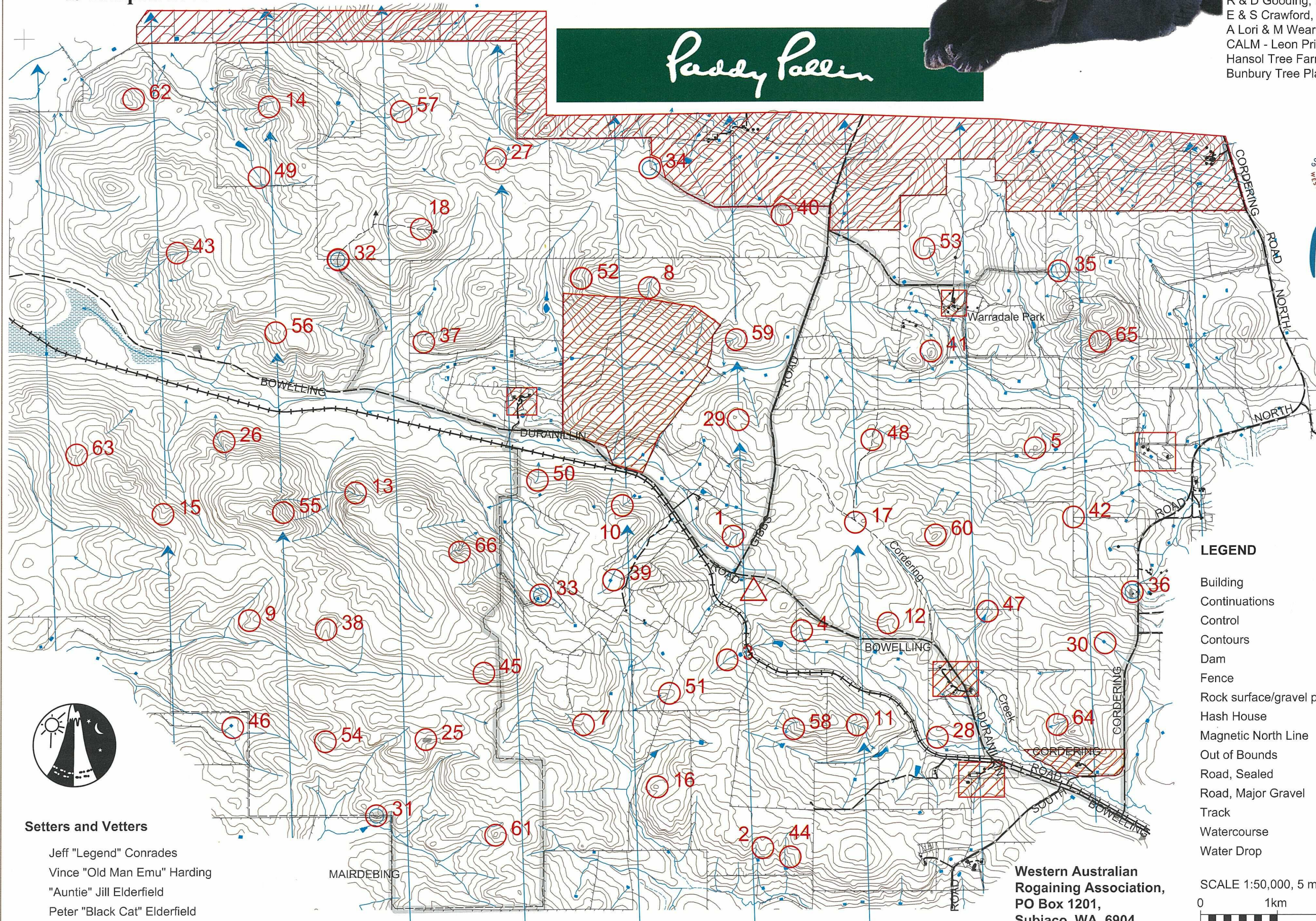
# BLACK CAT ROGAINE

WARA Autumn 12 Hour incorporating the 2008 Paddy Pallin Junior Cadet Challenge  
19th April 2008



Thanks to:

The generous farmers & companies:  
 Ross & Sue Earnshaw - Hash house site  
 Roger & Caroline Telfer - setters hut  
 I & J Wannenberg, M & K Wannenberg  
 R & D Gooding, D Gooding, D & E Gooding  
 E & S Crawford, H & R Lubcke, P & A Lubcke  
 A Lori & M Wearing-Smith,  
 CALM - Leon Price, Waters & Rivers - Phil Roberts  
 Hansol Tree Farms - Brett Humble  
 Bunbury Tree Plantations - Phil Uren



## Setters and Veters

Jeff "Legend" Conrades  
 Vince "Old Man Emu" Harding  
 "Auntie" Jill Elderfield  
 Peter "Black Cat" Elderfield

Western Australian  
 Rogaining Association,  
 PO Box 1201,  
 Subiaco, WA, 6904



WARA 12 Hou**Black Cat Rogaine** Incorporating the 2008 Paddy Pallin Junior Cadet Challenge - 19th April 2008

No.	Description	Points	No.	Description	Points	Important Information
1	The Water Course	10	37	The Spur	60	<b>Control Cards</b> From 0930 Saturday (9:30am)
2	The Spur	10	38	The Broad Gully	60	
3	The Water Course	10	39	The Dam - East Side	60	<b>Briefing</b> 0945 Saturday (9:45am)
4	A Rocky Spur	10	40	The Shallow Gully	60	
5	The Knoll	10	41	The Knoll - Northern End	60	<b>Start</b> 1000 Saturday (10:00am)
			42	The Fence Junction	60	
7	The Shallow Gully	20	43	The Water Course	70	<b>Finish</b> 2200 Saturday (10:00pm)
8	The Water Course	20	44	The Gully	70	
9	The Gully	20	45	The Shallow Gully	70	<b>Hash House</b> 1600 Saturday (4:00pm)
10	The Water Course - Top of	20	46	The Dam - East Side	70	
11	The Water Course	20	47	The Water Course	70	<b>Sunset</b> 1747
12	The Shallow Gully	20	48	The Track	70	
13	The Water Course - Below Boulders	30	49	The Water Course	80	<b>Moonrise</b> 1653
14	A Knoll	30	50	The Water Course Bend	80	
15	The Broad Gully	30	51	The Gully	80	<b>Moonset</b> 524
16	The Rocky Knoll	30	52	A Water Course - Head of	80	
17	The Track Junction	30	53	The Spur	80	<b>Late Penalty</b> 10 points per minute or part minute.  LATE (no points) later 10:30pm Sat 19th April
18	On The Track	30	54	The Spur	80	
25	The Rock Surface - N/W Side (40x30)	40	55	The Gully	90	<b>Controls Used</b> 59
26	The Spur	40	56	The Gully	90	
27	The Spur	40	57	The Water Course	90	<b>Total Points</b> 2400
28	A Rocky Outcrop	40	58	The Rocky Spur	90	
29	S/W Corner of a Blue Gum Plantation	40	59	Head of Water Course - among boulders	90	<b>Total Points</b> 3290
30	The Dam - East Edge	40	60	The Knoll	90	
31	A Knoll - <del>Water</del>	50	61	The Knoll	100	
32	Track Intersection - <del>Water</del>	50	62	The Shallow Gully	100	
33	The Fence Corner - North East Side - <del>Water</del>	50	63	The Gully	100	
34	Fence Bend - <del>Water</del>	50	64	The Water Course	100	
35	A Vegetation Boundary - <del>Water</del>	50	65	The Rocky Spur	100	
36	The Quarry - North Edge - <del>Water</del>	50	66	A Water Course	100	
		890				
<b>Water Drops</b> At Controls 31,32,33,34,35,36 If you are injured please make your way to a water drop or a patrolled road and wait there for help.			<b>Patrolled Roads.</b> See roads indicated on the map:			